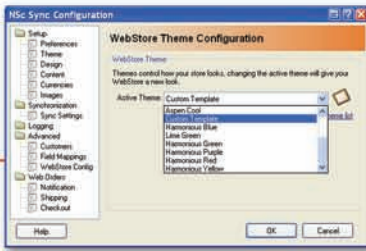
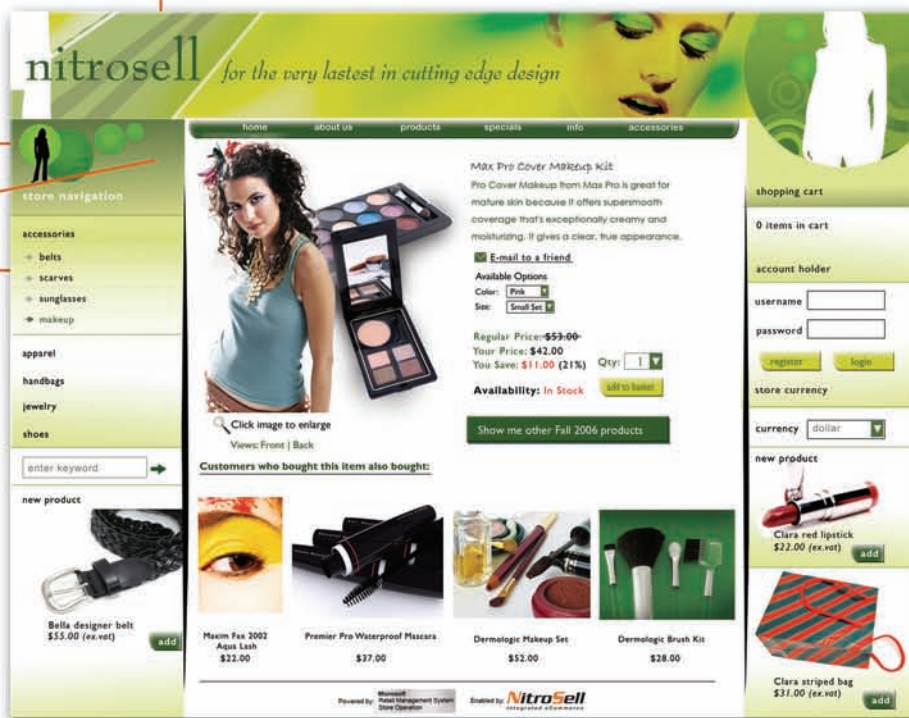
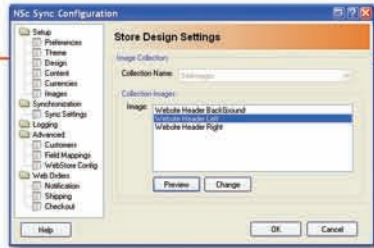


# Simple WebStore Setup

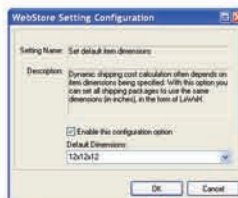
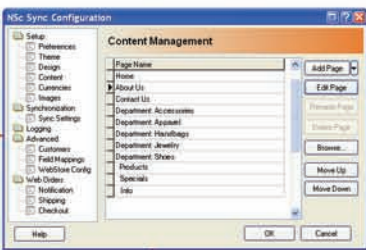
- 1. Selecting a store template.** You can choose from a wide range of templates by clicking the <Store Template> drop-down and selecting from the template list. The custom template option chosen below allows you to set the active template to a user-defined template.



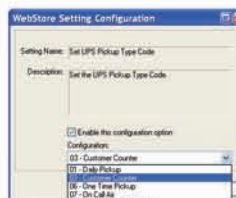
- 2. Selecting a WebStore header.** Your WebStore is made up of three images, left, right and background. Simply browse for the image you wish to use and click <Change> and <Synchronize> to view the change.



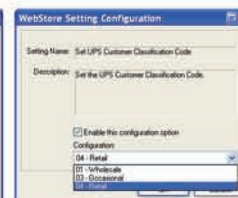
- 3. Adding content to your page.** Your Department and Category information are automatically added to your store and are featured in the left-hand navigation panel. (Note that any changes made locally to your RMS database Department /Category information will automatically be updated on your WebStore). The Home, About Us and Contact pages are also automatically created from your RMS database. To add new pages, select <Add page>, type your desired content and your new page will appear along the top navigation panel.



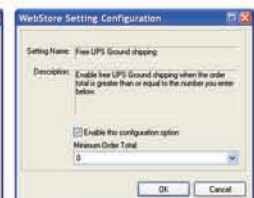
Setting the shipping package dimensions



Setting the type of pickup

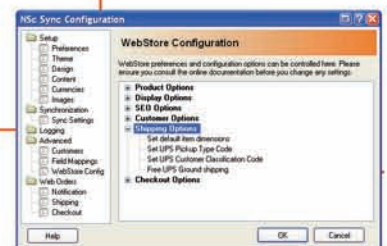


Setting the classification of customer



Enabling free UPS Ground shipping

- 4. Configuring UPS Shipping.** NitroSell allows you to control your WebStore shipping preferences. To view the shipping options that are available, click <Configuration>. Under <Advanced>, select <WebStore Config>. Expand <Shipping Options>.



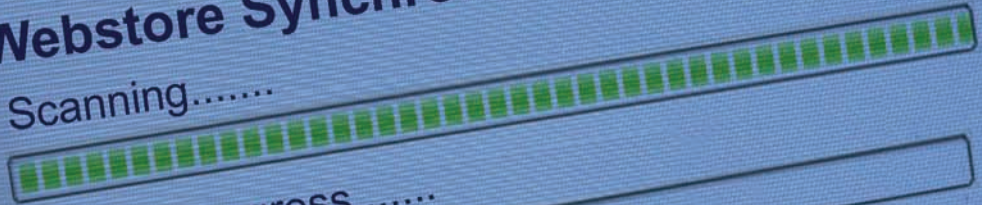
**NitroSell** automatically synchronizes  
your **WebStore** up to **every hour**

NitroSell uploading Microsoft RMS data to your store

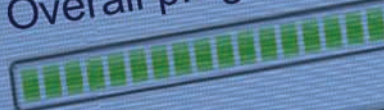


**Webstore Synchronization in progress**

Scanning.....



Overall progress.....



**NitroSell**  
Integrated eCommerce